

Vuba Pore Seal

Technical Datasheet

PRODUCT DESCRIPTION

Vuba Pore Seal is a high viscosity, single component acrylic pore sealer. This transparent, high quality, sealer is designed to seal pores in decorative aggregate floors.

USES

- Used to seal the pores of aggregate floors and stone carpets internally such as kitchens, bathrooms, corridors and so on.
- Vuba Pore Sealer is not a waterproofing product and therefore cannot be used for this purpose.
- After drying, it's possible to apply a water based Vuba Duraseal Product. This is necessary in wet rooms for water resistance.



UV resistant

1K

1K System



Suitable for floors and walls



Compatible with most sealers

AGGREGATE SIZE	COVERAGE RATE
1-3mm	535g/m ²
2-3mm	735g/m ²
2-5mm	1kg/m ²



WARNING

- Vuba Pore Seal is only suitable for internal floors so cannot be applied outside.
- To prevent foaming, never apply with a brush, always apply with a squeegee.
- Long lasting contact with water may cause whitening of the Vuba Pore Sealer.
- Do not seal a stone carpet which is applied on a wet subfloor.
- If there is underfloor heating, please stop it 1 day before the start of the application of the stone carpet.

PROPERTIES

Type of Resin	Acrylic
Colour	White - clear once dry.
Viscosity	Thixotropic paste
Solid-particle content	40.07% weight
Ignition point	Not applicable
Drying at 20 °C and 65% RV	Trafficable and paintable : after 24 - 36 hours , Almost complete drying: after 7 days , Fully dried: after 14 days
Processing temperature	5°C - 30°C
Substrate requirements	Sufficiently dry / Free of loose particle, grease, dust, dirt...
Dilution	Not recommended
Cleaning	Water
Usage	1-3mm 535g/m ² , 2-3mm 735g/m ² , 2-5mm 1kg/m ²
Packaging	Buckets of 3 or 10 kg
Storage	12 months (in sealed, original packaging, 5-25°C)



10kg Tub or 3kg Tub



White



Silk Finish

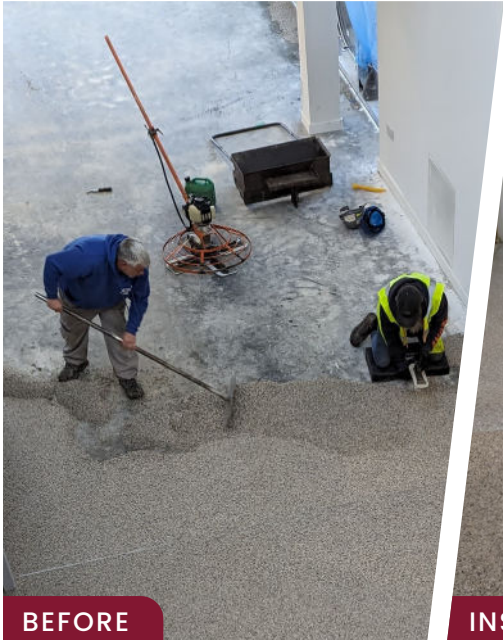


Surface Preparation

The aggregated application surface should be smooth, well-trowelled, and applied using fine grade aggregates. Remove any outstanding “nibs” with a trowel, and vacuum before applying Vuba Pore Seal.

Application Advice

Apply Pore Seal with a flat-blade in a thin layer, removing any excess with a short or medium-pile roller. Excess product will dry with a cloudy appearance so it is important to ensure a thin, even coverage. Do not apply with a brush as this can cause foaming which will spoil the finish. Suitable for application between 5 and 30°C.



Drying Time

Pore Seal will air dry in its initial state within 24–36 hours at 20°C, and is ready to be over-sealed with Duraseal within 24–48 hours at the same temperature. It will be fully dry after approximately 14 days. Please note, temperature can affect drying time – slowing down in cooler temperatures and speeding up when warm.



Storage

Unopened Pore Seal can be stored between 5 and 25°C, with a shelf life of 12 months. Once opened Pore Seal should be used as soon as possible – ideally use the full tub in one application.



Precautions

Pore Seal should be used in a well-ventilated area, with appropriate PPE such as gloves and protective eye-wear. Should the material come into contact with eyes, it should be immediately rinsed with sufficient clean water.

Vuba's products are guaranteed against defective materials and manufacture and are sold subject to its standard Terms and Conditions of Sale, copies of which can be obtained on request. Any suggested practices or installation specifications for the composite floor or wall system (as opposed to individual product performance specifications) included in this communication (or any other) from Vuba Chemical Innovations Limited constitute potential options only and do not constitute nor replace professional advice in such regard. Vuba Chemical Innovations Limited recommends any customer seek independent advice from a qualified consultant prior to reaching any decision on design, installation or otherwise. System Datasheet written for Vuba Chemical Innovations Limited. Please consult Technical Team in your own country region for specific details.